

Horse Creek Cattle Co.

Newell, Butte County South Dakota

7924 Acres

\$5,150,000



Snook & Sons Realty
979 New Haven Rd
Hulett, Wyoming 82720

www.snookrealty.com ~ snookandsonsrealty@gmail.com
307-467-5760 office ~ 307-290-4000 cell





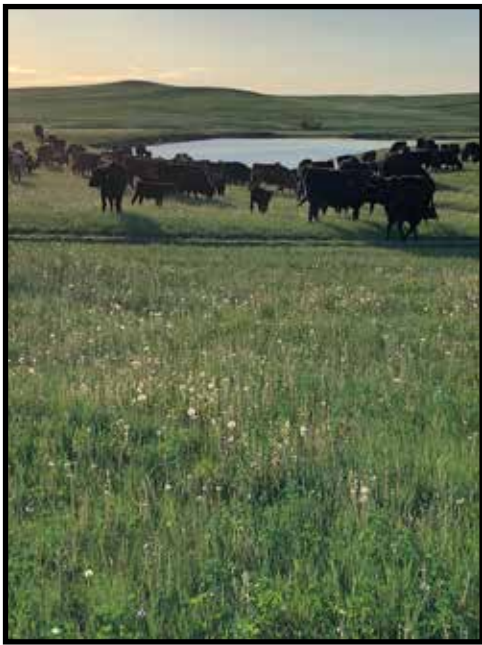
Horse Creek Cattle Co. is located northwest of Newell, South Dakota in Butte County. 30 miles to Belle Fourche, SD 60 miles to Rapid City SD.

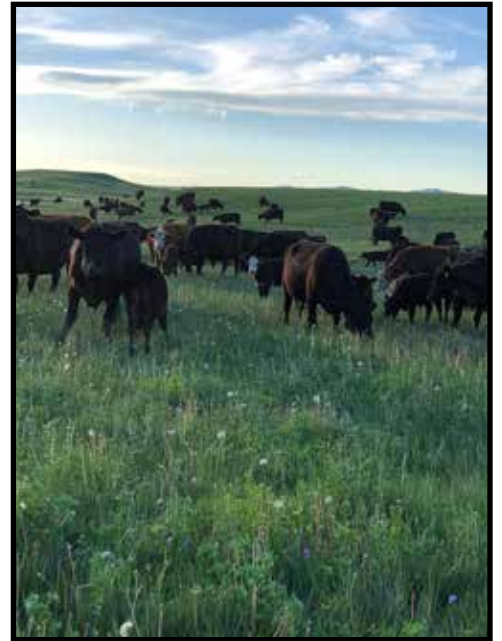
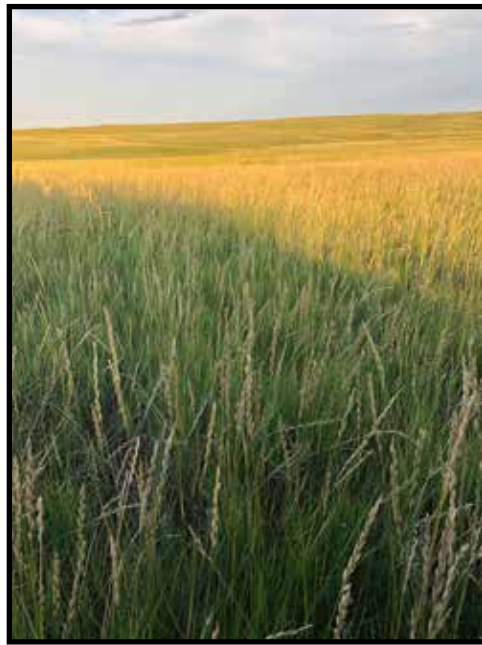
This ranch consists of 7924 total acres, with 7364 deeded acres, 400 acres of BLM lease and 160 acres private in holding.

This ranch is a great summer pasture for yearlings or cow-calve pairs. Excellent grazing for above average gains. The ranch is extremely productive and is broken into seven separate pastures. There is a pipeline running all throughout the ranch that feeds 16 water tanks. The water is provided for from a deep well at headquarters. There are also 35 water dams on the ranch. Horse Creek flows through the center of the ranch & flows for much of the year. There are lots of water holes along creek & creek sub-irrigates creek bottoms. Carrying capacity rated at 1200-1500 yearlings or 500-600 cow calve pairs. Improvements include two open faced sheds & a shop with a small bunkhouse in the corner. There is a good working set of corrals and there is electric power on large part of the ranch. Taxes \$26,500.

Price \$5,150,000.

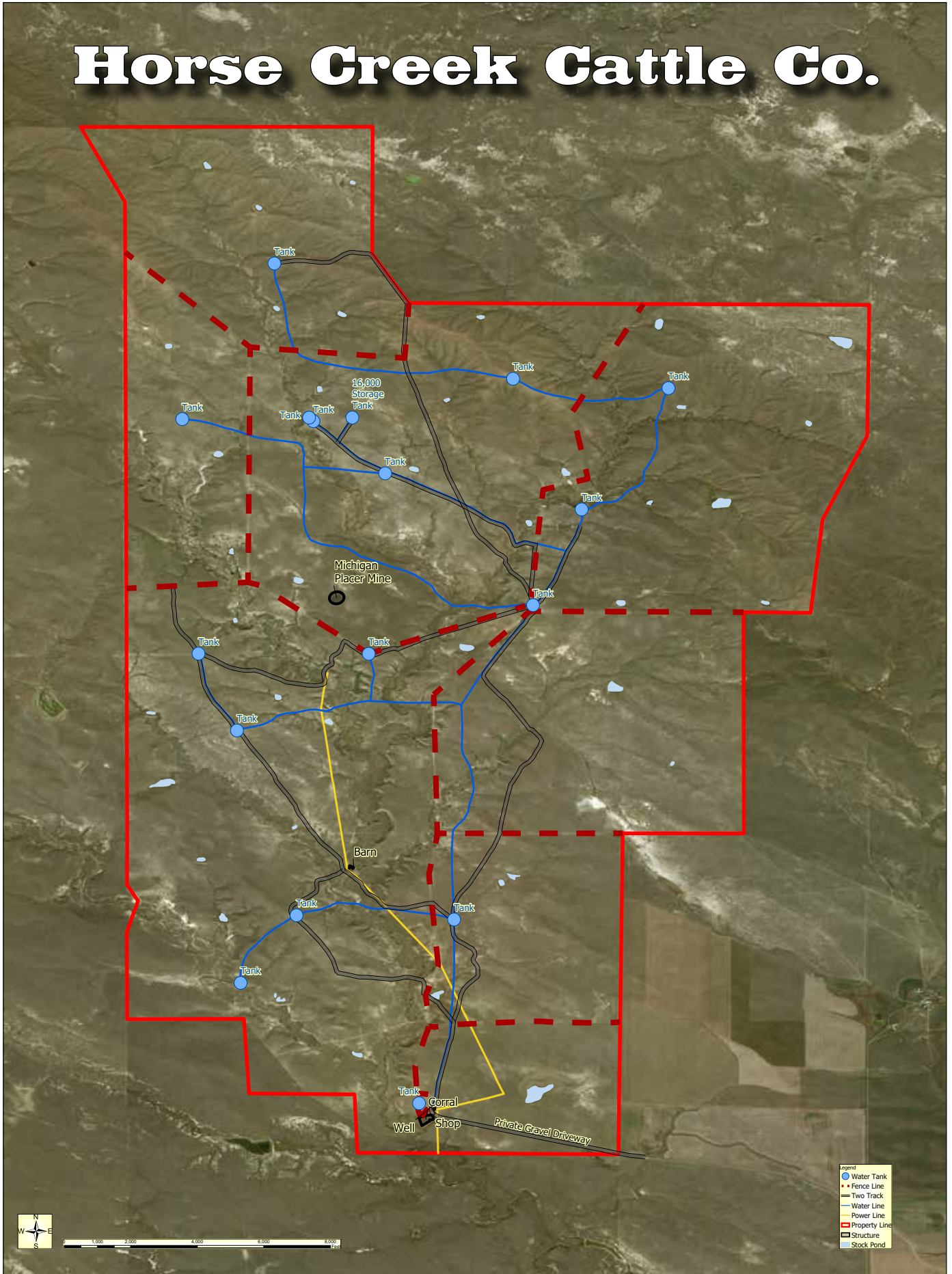






Pasture Area Satellite Map

Horse Creek Cattle Co.



Area Map for Horse Creek Cattle Co

